

# Please note:

*To begin this post, it is noted you will spend a few minutes doing a bit of reading. Please allow time for this likewise. I would also like to say that as a film collector we know how much stuff it takes to enjoy our hobby. We build a library of films and along the way we have multiple projectors and other sorts of equipment to enjoy it. Those who do not understand often suggest we get rid of what we do not use. But to us older equipment which is outdated becomes our memories for stories of how we got started. We just can't pass it up, give it away, or worse, throw it out. An old projector beyond repair becomes a center piece in a hutch behind glass doors. A faded print becomes test film or leader scrap. And so on.*

Please do not re-post on any other film site or forums.

We begin this document with the final very last pictures of my Massachusetts projection booth and theater that were taken September 22, 2018 before it was broken down for the movers to pack it up. Departing Falmouth, on Cape Cod and headed to the Tampa area of Florida.

Text below each image will describe it.

Enjoy & with thanks for your time reading along. I know many of you are aware of this project and await the pictures. So here we go!

Chip Gelmini

Continue scrolling to see what else comes!



38 Years of Movies from this tiny room!

January 1980 – September 2018



Everything you see here for the cinema made the trip safely!



The screen to my back. Good riddance to everything  
That was not part of the cinema ambience!



Original 1974 cinema chairs await their new location.  
You will see these again later.



Some things never change.  
They only get relocated!



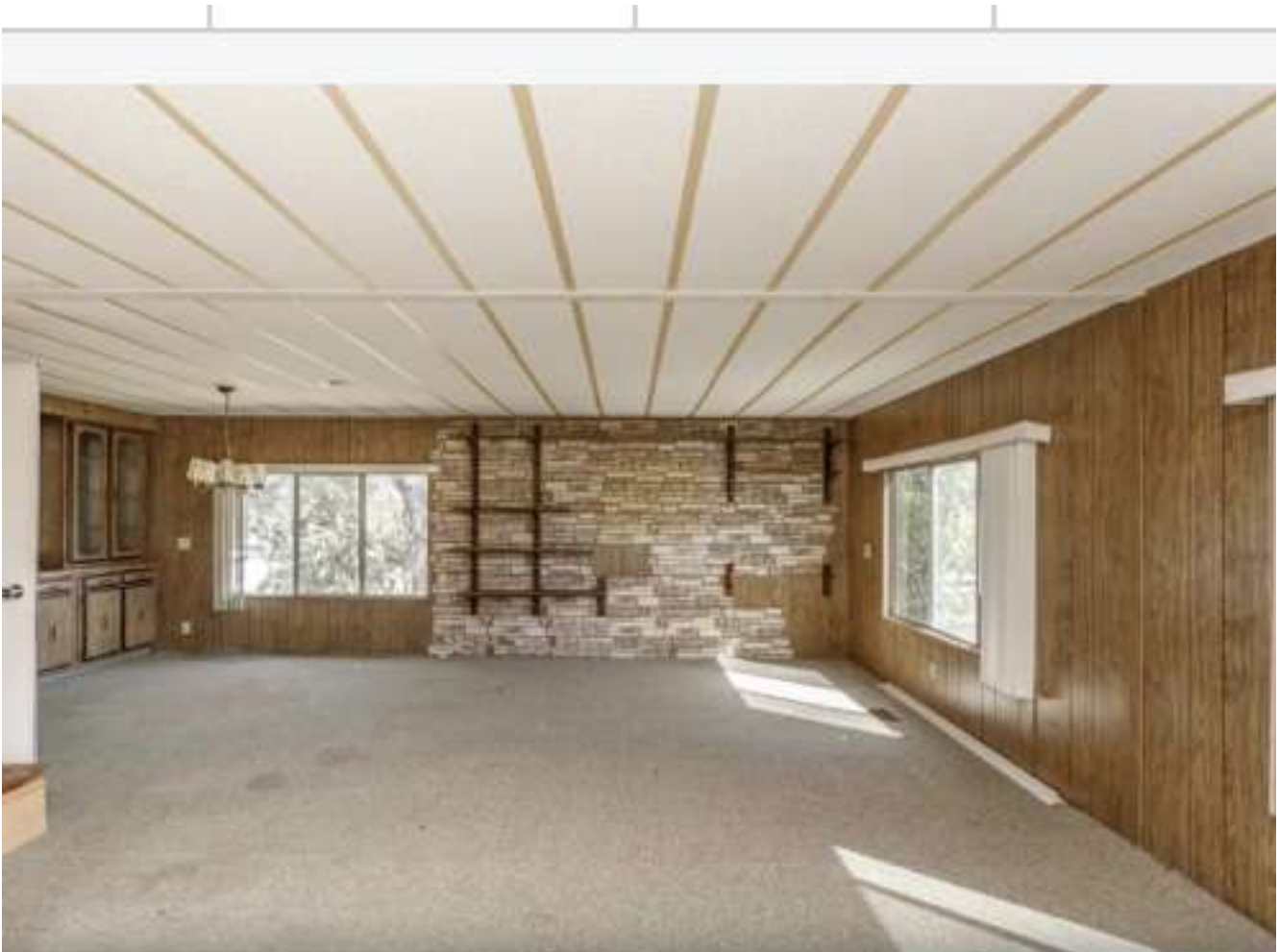
This image shows how tight for space it really  
Was behind the Towers. It was about 14 inches  
From the rear Tower stud to the concrete wall.  
To move behind the Towers between the  
Rewind bench and sound rack required “side-stepping”

Continue to scroll for the  
Newest first time ever pictures  
Of my Florida theater!

As many of you are aware, the last few years on Cape Cod were not that good for me. Having lived most of my life in their home, I saw my parents get old and very ill very quickly. We had 40 years in that one location on Cape Cod. And we have many great family moments, full of love, food, and laughter. God bless Mom and Dad. They always enjoyed the fact that my hobby kept me happy. They were overjoyed when I chose my hobby as a career and did well with it. If they were against anything about it, they always hated the amount of money I poured in to it, and would have preferred that I had saved the money instead of spend it.

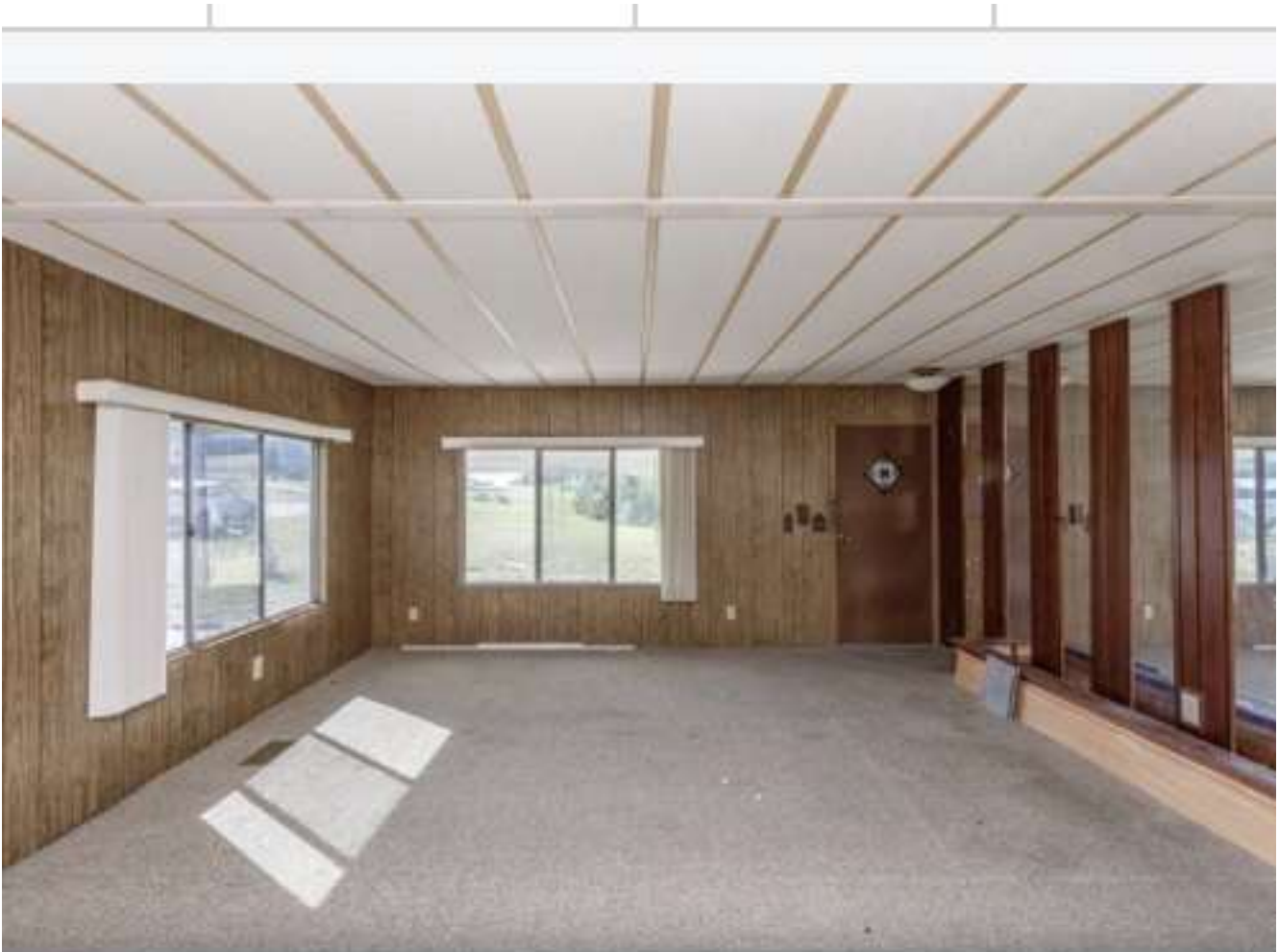
To that I say look at where we are now. Started long ago, and we as collectors are proud of where we are today. I am so glad and blessed that Dad & Mom allowed me to have the hobby in their home. Indeed to do this, I shared it with a laundry, food pantry, and woodshop. Basement by day – and Cinema by night.

So now times have changed. My living room. My home. And most of all, my Cinema.....

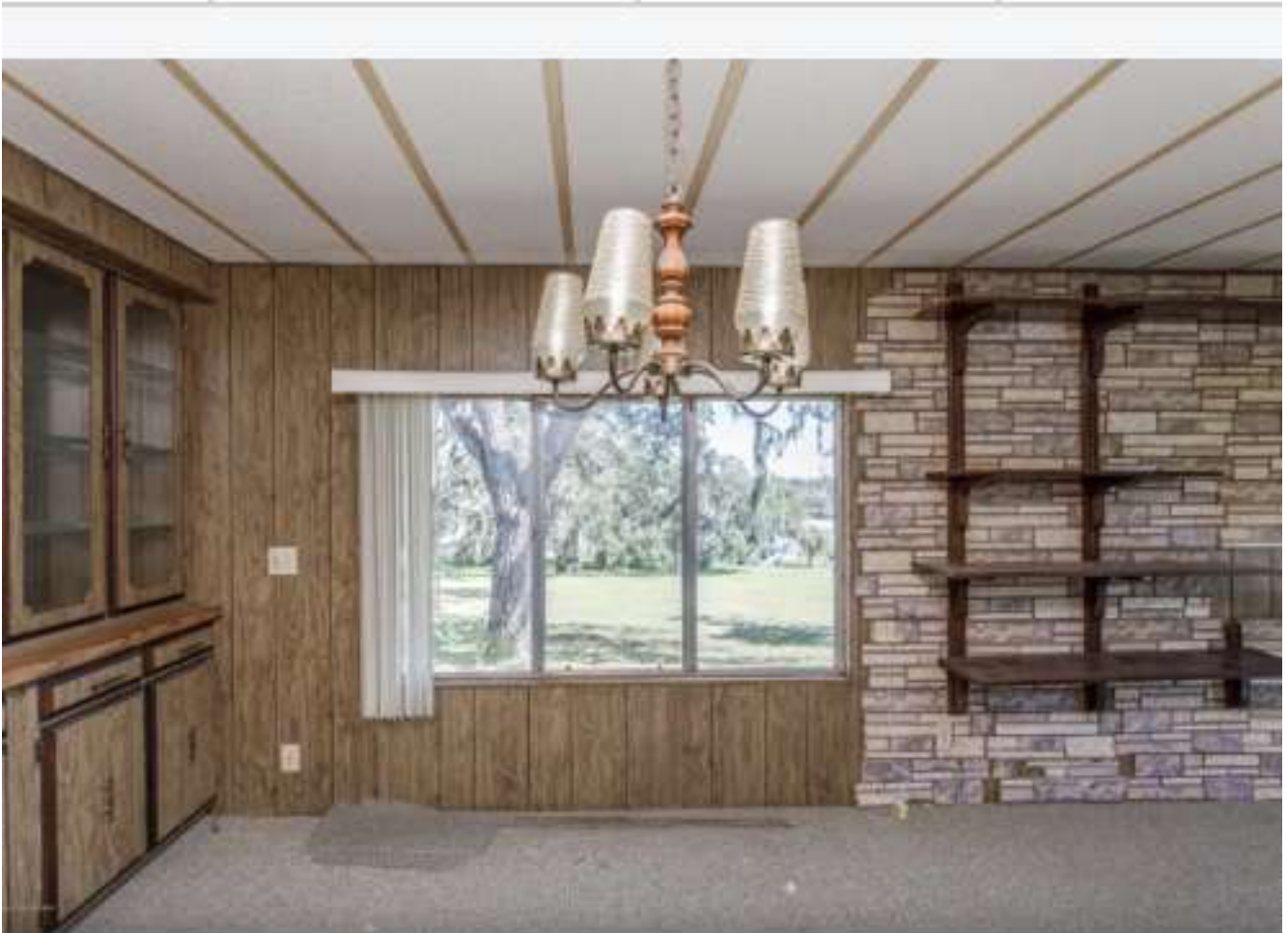


From the real estate listing as I first found the home.  
The main living room. We are looking at what becomes projection area.  
It will be an “open concept.” No wall separating the equipment from the seats.  
This photo shows the North side of the room. The front yard is to the right.  
See the hutch to the upper left. You’ll see that, later as well!  
By the way the removal of those fake bricks was a pain in the ass.





My back to projection area. The screen will be placed to the left of the door.  
Not a new screen. But the original full size screen from the basement cinema.  
It makes the journey safely. "Please be careful", I said to the movers.  
Those mirrors to the right will be hidden by two large book cases.  
The planter box under the mirrors goes to the dump.  
These pictures were done with a wide angle lens.  
The rooms are a bit smaller then they appear.  
I did not shoot these pictures.



The hutch you'll see again.  
The chandelier moved out with the planter box.  
The shelves on the wall became part of projection.  
Other shelves were saved for future use.  
The glued on 1970's era brick took almost 3 hours to remove.  
Some kind of super glue. It was almost like "brick by brick" to remove it.  
Ugliest shit I've ever seen. Not the bricks. But the chandelier!

Let's take a moment to show you what this house looked like On the day of the closing. Here's a picture of the kitchen from The real estate listings. Note the 70's era wall oven in the distance:



Continue scrolling:

After replacing subfloors  
Lower cabinets,  
A new floor is put down  
New lower cabinets  
Ovens removed  
Upper original cabinets  
And original paneling is painted  
Future remodeling includes  
A shelf for a microwave oven  
Where the wall oven used to be.



Continue scrolling....

Welcome to

The logo consists of the letters 'CGGC' in a bold, blue, sans-serif font. The letters are spaced out and have a slight shadow effect.

Chip Gelmini's Cinema

Now Showing in Brooksville, Florida USA!

Continue scrolling....



From the kitchen – entering the cinema.



The view through the large white door.  
The ceiling light replaced the chandelier.



A view from the screen.  
I stood near the exit door.





A view from a cinema chair.  
Projector to screen is 14 feet.  
The original screen from the 26 foot basement theater.  
To use properly here, it will be soon matted down slightly.  
8 inches down from the top and bottom of the frame  
(4 inches of black you see already + 4 new inches)  
And down the sides 13.5 inches wide. Again, that's including  
The 4 inches of black already shown, PLUS the additional  
Amount needed.



My Dad built the cabinets.  
Used for DVD storage.  
And some vintage equipment as well.



Advancements of Technology



Two brand new Towers. Dual format for super 8 and 16mm.  
GS 1200 projectors and the Panasonic AX-200-U.



An office desk to work on projectors, or test run short reels.



The start of a 3-bench system for rewind, projectors, and DVD equipment.



Decorations, supplies, and tools for running shows.  
Split reels in 8/16/35mm.



Behind the new Towers. The increased space above the GS handle  
Allows for 16mm projectors model B&H 2592.





The bottom of the Towers. Super 8 Goldberg reels @ 2000 foot.  
35mm Christie Platter AW3 parts. Rollers & drive motor.  
Deluxe double drawer Neumade rewind bench.



With cover down, everything lines up nicely.



The back side of the Towers.  
Baldor speed controllers model BC138.  
The different placements were to find out which height is better.  
I'm going with the one on the right.



Bottom of Towers on the backside.



The DVD station.  
One standard def at 4 x 3 letterboxed.  
A 2<sup>nd</sup> standard def at 16 x 9  
A blu-ray at max resolution.  
1 switchbox to the monitor via composite yellow RCA cables.  
2<sup>nd</sup> switch box from Cables 2 Go  
Running component RCA direct to the AX-200-U.  
RCA sound to the sound system.  
For advance selection on the monitor while another disc  
Is playing on the big screen.  
And yes. Changeovers with DVD!  
In this method the projector inputs or ratios are never adjusted.  
Yamaha booth monitor via Headphone output only.



Cinema sound system.  
1200 watts of power.  
L C R + Subwoofers (2) @ 250 per channel  
Rear Surrounds @ 100 watts per channel  
Subwoofers are tied into the right channel only of the 2<sup>nd</sup> stronger amp  
That shares the left channel with center.  
Left and Rights are equalized.



Film storage for multiple formats under the rewind bench.



Top of rewind bench.  
Neumade X-3 rewinds with motor and pulley for 35mm.  
Customized adapters to the 5/16 shafts for super 8 & 16mm.





Ciro Guillotine M-3 Special splicers.  
Left to right: 35 / 16 & reg 8 / super 8  
These are my favorite splicers and the  
Best ones I've ever owned.  
The official model number is "M-3 Special"  
Plus the format you need.



Yep. You see that right. Gizmo's done.



Even more storage for reels.  
And some extra GS 1200 machines await their turn in the rotation.



Theater chairs are now ready all the time!  
In the basement they were to the side  
And we had to set up when we needed them  
And put away when we were done.



Beware! They're watching you!



The hutch has become a place for storage.  
It's been crazy getting settled.  
The plan is to display vintage equipment  
No longer used but once played  
A major roll in getting this hobby started.



A Kelmar theater dimmer. One from a multiplex!  
Soon to be connected and fading away!  
You don't get these at the big box stores!



The view from Tower # 2





The view from Tower #1.

Flash photography was critical on this shot.  
Some shadowing on the screen because of it.

I am very pleased to have shared these images with you. Thanks for the support of the move I made from Cape Cod to Florida. The past few years and the last 5 months have been very stressful. In some ways I am feeling better. In other ways it is still surreal. They say healing takes time. I believe I am off to a very good start.

Thank you very much for reading if you have come this far.

Comments are appreciated.

All of my friends in this film forum are welcome to visit. All you have to do is ask!

Kindly

Chip Gelmini

[Clgjr1960@aol.com](mailto:Clgjr1960@aol.com)

